

# MANAGING CANCER AT WORK

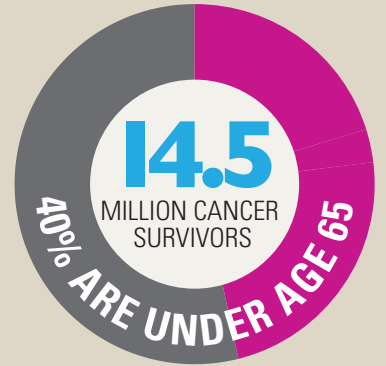
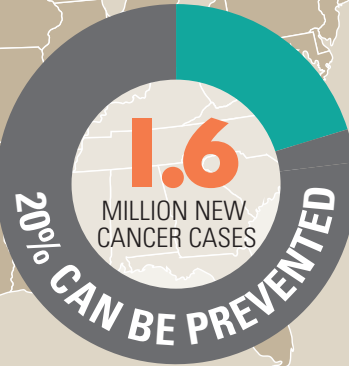
All of us have been touched by cancer.  
Whether it's a parent, spouse, child or friend, each one of us has had to deal  
with cancer and its physical, emotional, financial and spiritual toll.

## U.S. CANCER FACTS 2016

For 1 in 2 Men,  
and 1 in 3 Women  
LIFE-THREATENING CANCER  
IS IN THE FUTURE.

**596,690**

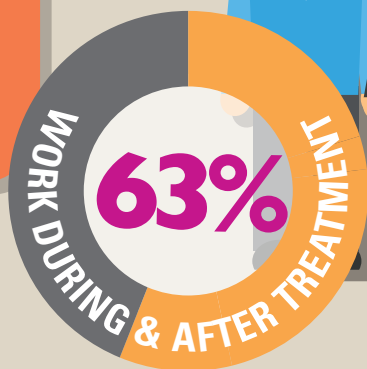
ESTIMATED CANCER DEATHS



## CANCER IN THE WORKPLACE

**60%**

NOT ADVISED  
ON THEIR  
ABILITY TO  
WORK DURING  
TREATMENT



**56%**

Employers who  
are unaware of  
employee's needs  
to provide  
proper support

**20%**

OF ANNUAL SALARY: COST  
OF REPLACING AN EMPLOYEE

## WHAT IS MANAGING CANCER AT WORK?

To meet the unique challenges to support  
working cancer patients, Johns Hopkins  
faculty created Managing Cancer at Work.

EMPLOYEES  
ARE INFORMED,  
ENGAGED AND  
FEEL  
SUPPORTED.



A LOW-COST, HIGH-IMPACT  
EMPLOYEE BENEFIT PROGRAM  
TO HELP EMPLOYEES:



RECOGNIZE EARLY  
WARNING SIGNS



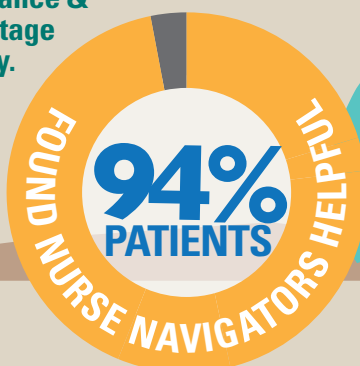
UNDERSTAND &  
MANAGE TREATMENT



BE EDUCATED &  
SUPPORT COLLEAGUES

## THE NURSE NAVIGATOR ADVANTAGE

Johns Hopkins oncology nurse navigators  
provide critical guidance &  
resources for each stage  
of the cancer journey.



### WITHOUT A NURSE NAVIGATOR

**33%**

LACK INFORMATION ABOUT  
THEIR TREATMENT PLAN

**50%**

DON'T REALLY  
UNDERSTAND THEIR  
INSURANCE COVERAGE

**37%**

LACK KNOWLEDGE OF  
SUPPORT ORGANIZATIONS

SOURCES: JOHNS HOPKINS HEALTHCARE SOLUTIONS (JOHNSHOPKINSHEALTHCARESOLUTIONS.COM)  
MAKING IT WORK: MACMILLAN CANCER SUPPORT (HTTP://WWW.JOHNSHOPKINSHEALTHCARESOLUTIONS.COM/ANP-CONTENT/UPLOADS/2016/05/MAKINGITWORKPOLICYPAGE.PDF)  
AMERICAN CANCER SOCIETY FACTS AND FIGURES, 2016 (HTTP://WWW.CANCER.ORG/ACS/GROUPS/CONTENT/@EDITORIAL/DOCUMENTS/DOCUMENT/ACSFC-044562.PDF)  
CANCERCARE: PATIENT ACCESS AND ENGAGEMENT REPORT, 2016 (HTTPS://MEDIA.CANCERCARE.ORG/ACCESS/ENGAGEMENTREPORT/FINAL-CANCERCARE-CAPER-10MAY2016-HSRPDF)